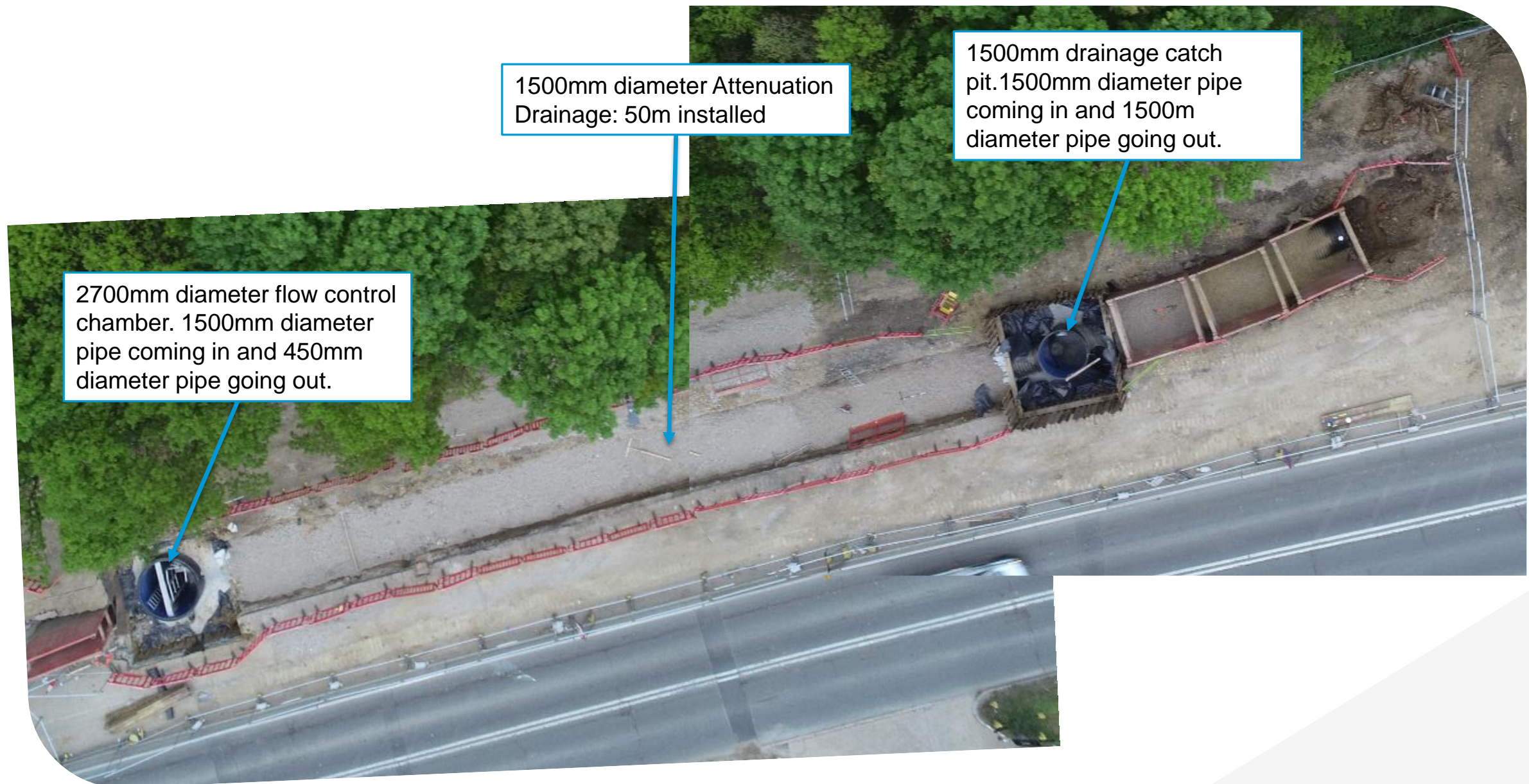


## A414 Edinburgh Way

Latest progress – April 2019

### Edinburgh Way – Drainage Works Kwik Fit to Harlow Mill Roundabout

Drainage works have progress along the North side of Edinburgh Way opposite the Gates Ford garage. Those of you who pass the scheme regularly will have seen that we are now installing our large 1500mm diameter drainage pipes along with the 2700mm diameter catch pits. This system works as an attenuation system meaning it will store water before releasing it into the local water course at a set flow rate.

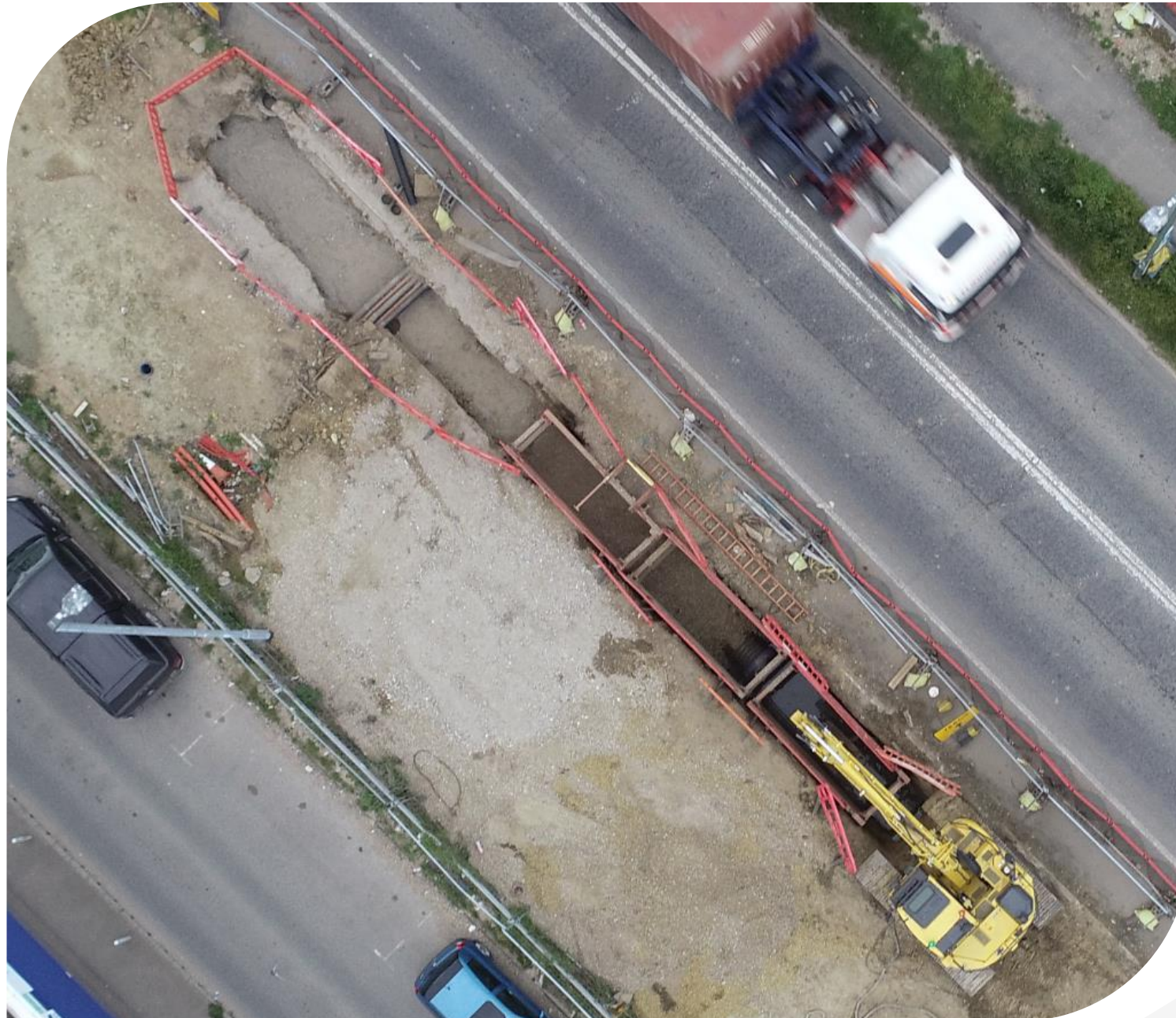


# A414 Edinburgh Way

Latest progress – April 2019

## Edinburgh Way – HSS – Marshall Skoda

Following the completion of the BT Openreach Works drainage installation has commenced along the North side of Edinburgh Way between HSS & Marshall Skoda. We have completed 50% of the 750mm diameter drainage pipe.



## A414 Edinburgh Way

### Harlow Mill Roundabout Working Area Layout Sketch

Q1 – Q5 are the working areas we refer to for our site works around Harlow Mill Roundabout. These areas are referenced in the following slides.



# A414 Edinburgh Way

Latest progress – April 2019

## Edinburgh Way – Road Box Construction

We have completed the construction of the road box to Q1 of Harlow Mill roundabout. This includes the installation of kerbs, drainage kerbs and footpath kerbs. Adjusting existing manholes and completing the final trim to the sub base in preparation for temporary surfacing during May.



New road widening area.

New footpath

# A414 Edinburgh Way

## Where to find out more

Further details about the scheme can be found on the Essex County Council website at:

- <https://www.essexhighways.org/highway-schemes-and-developments/major-schemes/a414-edinburgh-way-cambridge-road.aspx>
- Alternatively click on the QR code provided.
- Information about other works in the area can be found at: [www.roadworks.org](http://www.roadworks.org) or via the QR code on the right.



For general enquiries, please contact the Essex County Council customer service team:

- By telephone 0345 603 7631
- Online: <http://essex.gov.uk/enquiries>
- Or use the QR code provided



## A414 Edinburgh Way

### Looking into the future

We have now created a full visualisation of how the finished scheme will look. Please scan the QR code below or use the link to look into the future.



<https://youtu.be/8dUmeeqYn1g>

# A414 Edinburgh Way

## Edinburgh Way – North side

### Planned activities May 2019

#### Phase

**North side phase 1**

**North side phase 2**

**North side phase 3**

#### Main Works

- Commence installation of the drainage works.
- Continue installation of the drainage works.
- Continue with drainage installation.
- Road box excavation to the north side of Harlow Mill Roundabout.

# A414 Edinburgh Way

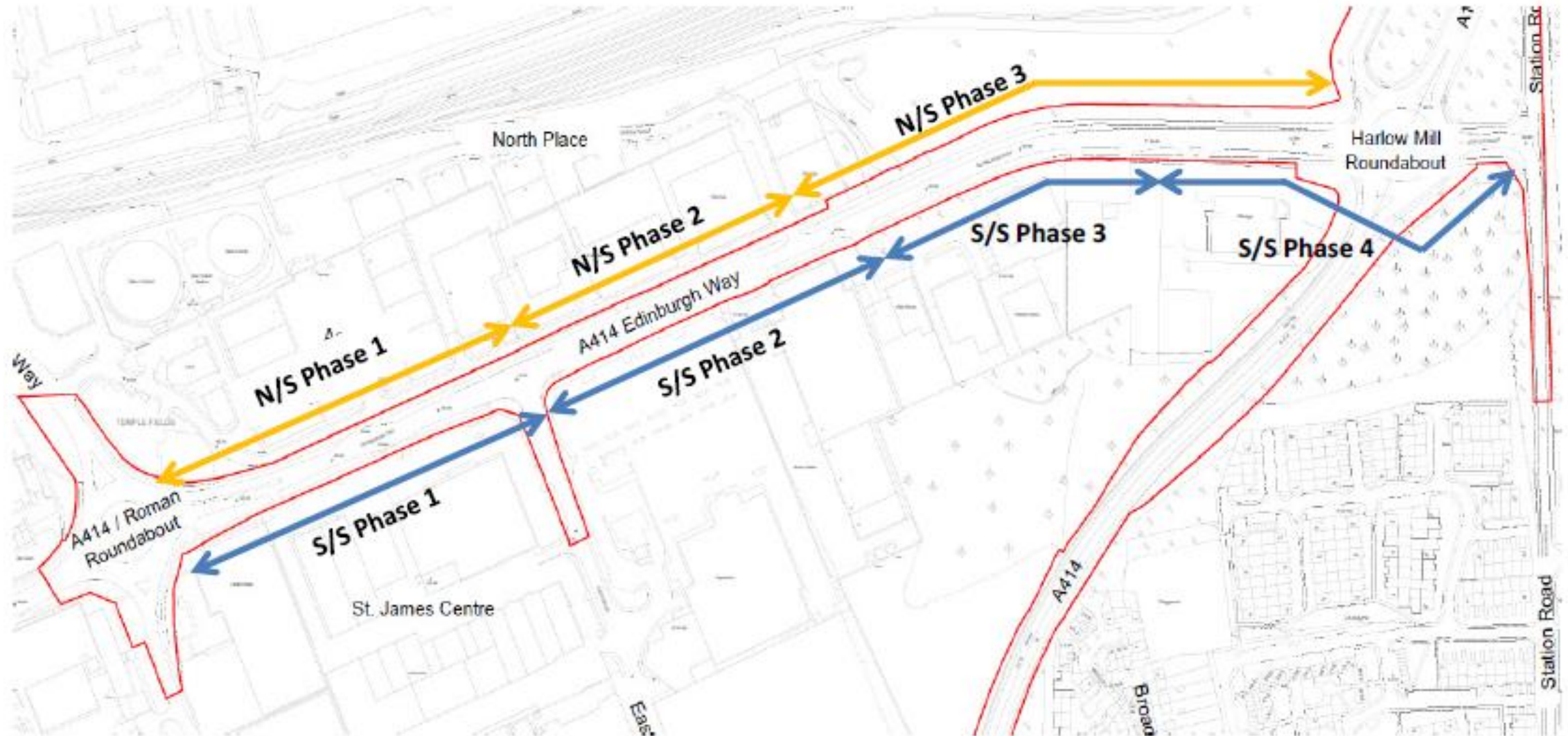
Edinburgh Way – South side

Planned activities May 2019

| <b>Phase</b>              | <b>Utility Diversions</b>   | <b>Main Works</b>  |
|---------------------------|---|--|
| <b>South side phase 1</b> | <ul style="list-style-type: none"><li>■ Openreach cable pulling and connections</li><li>■ Vodafone cable installation</li></ul> | <ul style="list-style-type: none"><li>■ None</li></ul>   |
| <b>South side phase 2</b> | <ul style="list-style-type: none"><li>■ Openreach cable box installation</li><li>■ Vodafone cable installation</li></ul>        | <ul style="list-style-type: none"><li>■ None</li></ul>   |
| <b>South side phase 3</b> | <ul style="list-style-type: none"><li>■ Openreach cable box installation</li><li>■ Vodafone cable installation</li></ul>        | <ul style="list-style-type: none"><li>■ None</li></ul>   |
| <b>South side phase 4</b> | <ul style="list-style-type: none"><li>■ Vodafone Ducts</li></ul>  | <ul style="list-style-type: none"><li>■ Complete back fill to the crib wall outside Gates Ford and commence drainage installation.</li></ul> |



# A414 Edinburgh Way Phase Sections



## A414 Edinburgh Way

### No Right Turn Signs



There are a series of No Right Turn signs in place along the scheme. These are in place for the safety of the public, the workforce and are also a legal requirement. Please ensure they are adhered to.